

Applicable only during low season

1 February until 31 May 2019 and from 1 September until 30 November 2019

All prices in US dollars

Продолжительность (недели)	1	2	3	4	5	6	7	8	12	16	20	24
Регистрационный сбор	140	140	140	140	140	140	140	140	140	140	140	140

GENERAL ENGLISH COURSE A (6 classes per day, 50 minutes each one)												
Weeks	1	2	3	4	5	6	7	8	12	16	20	24
Single Room	700	1 350	1 461	1 750	2 188	2 626	3 064	3 500	5 250	7 000	8 750	10 500
Double Room	500	1 000	1 230	1 470	1 838	2 206	2 574	2 940	4 410	5 880	7 350	8 820
Triple Room	400	750	1 140	1 360	1 700	2 040	2 380	2 720	4 080	5 440	6 800	8 160
Quadruple room			1 000	1 260	1 575	1 890	2 205	2 520	3 780	5 040	6 300	7 560

4 individual classes (one on or  
2 group classes with Native speakers

GENERAL ENGLISH COURSE B (8 classes per day, 50 minutes each one)												
Weeks	1	2	3	4	5	6	7	8	12	16	20	24
Single Room	950	1 500	1 638	1 820	2 275	2 730	3 185	3 640	5 460	7 280	9 100	10 920
Double Room	750	1 300	1 386	1 540	1 925	2 310	2 695	3 080	4 620	6 160	7 700	9 240
Triple Room	500	850	1 287	1 430	1 788	2 146	2 504	2 860	4 290	5 720	7 150	8 580

6 individual classes (one on or  
2 group classes with Native speakers

BUSINESS ENGLISH, TOEIC, TOEFL, IELTS (6 classes per day, 50 minutes each one)												
Weeks	1	2	3	4	5	6	7	8	12	16	20	24
Single Room	980	1 500	1 850	2 100	2 625	3 150	3 675	4 200	6 300	8 300	10 400	12 500
Double Room	750	1 300	1 600	1 800	2 250	2 700	3 150	3 600	5 400	7 100	8 900	10 700
Triple Room	650	950	1 450	1 550	1 940	2 340	2 720	3 100	4 650	6 200	7 750	9 300

4 individual classes (one on or  
2 group classes with Native speakers

BUSINESS ENGLISH, TOEIC, TOEFL, IELTS (8 classes per day, 50 minutes each one)												
Weeks	1	2	3	4	5	6	7	8	12	16	20	24
Single Room	1 200	1 700	2 000	2 300	2 875	3 450	4 025	4 600	6 900	9 100	11 400	13 700
Double Room	950	1 450	1 700	2 050	2 570	3 080	3 590	4 100	6 150	8 100	10 150	12 200
Triple Room	780	1 200	1 500	1 650	2 070	2 480	2 890	3 300	4 950	6 500	8 150	9 800

6 individual classes (one on or  
2 group classes with Native speakers

**OTHER COSTS**

Security deposit	\$100
Maintenance fee (per week)	₱350
SSP	₱6 300
VISA Waiver	₱3 330
Pacific Cebu Resort 2 weeks (if need)	\$120

- \*Surcharge for SEA VIEW room \$ 25 per week
- \*The school assists the VISA extension of the student after 29 days.
- \*The school rate of Genius English Proficiency Academy is subject to change without prior notice.
- \*Free service: Pick up from the Airport-Genius English.
- \* Maintenance fee - Room cleaning & laundry (twice per week)
- \* School fees are inclusive of tuition, accommodation and 3 meals a day.
- Exclude the books fee
- \* Electricity will be paid by the students

**Entry Requirements**  
Passport and Enrollment form

\* Please read our terms and conditions , house rules for more



Applicable only during low season

1 February until 31 May 2019 and from 1 September until 30 November 2019

All prices in US dollars

Продолжительность (недели)	1	2	3	4	5	6	7	8	12	16	20	24
Регистрационный сбор	140	140	140	140	140	140	140	140	140	140	140	140

**GENERAL ENGLISH COURSE A (6 classes per day, 50 minutes each one)**

Weeks	1	2	3	4	5	6	7	8	12	16	20	24
Single Room	700	1 350	1 461	1 750	2 188	2 626	3 064	3 500	5 250	7 000	8 750	10 500
Double Room	500	1 000	1 230	1 470	1 838	2 206	2 574	2 940	4 410	5 880	7 350	8 820
Triple Room	400	750	1 140	1 360	1 700	2 040	2 380	2 720	4 080	5 440	6 800	8 160
Quadruple room			1 000	1 260	1 575	1 890	2 205	2 520	3 780	5 040	6 300	7 560

4 individual classes (one on or  
2 group classes with Native speakers

**GENERAL ENGLISH COURSE B (8 classes per day, 50 minutes each one)**

Weeks	1	2	3	4	5	6	7	8	12	16	20	24
Single Room	950	1 500	1 638	1 820	2 275	2 730	3 185	3 640	5 460	7 280	9 100	10 920
Double Room	750	1 300	1 386	1 540	1 925	2 310	2 695	3 080	4 620	6 160	7 700	9 240
Triple Room	500	850	1 287	1 430	1 788	2 146	2 504	2 860	4 290	5 720	7 150	8 580

6 individual classes (one on or  
2 group classes with Native speakers

**BUSINESS ENGLISH, TOEIC, TOEFL, IELTS (6 classes per day, 50 minutes each one)**

Weeks	1	2	3	4	5	6	7	8	12	16	20	24
Single Room	980	1 500	1 850	2 100	2 625	3 150	3 675	4 200	6 300	8 300	10 400	12 500
Double Room	750	1 300	1 600	1 800	2 250	2 700	3 150	3 600	5 400	7 100	8 900	10 700
Triple Room	650	950	1 450	1 550	1 940	2 340	2 720	3 100	4 650	6 200	7 750	9 300

4 individual classes (one on or  
2 group classes with Native speakers

**BUSINESS ENGLISH, TOEIC, TOEFL, IELTS (8 classes per day, 50 minutes each one)**

Weeks	1	2	3	4	5	6	7	8	12	16	20	24
Single Room	1 200	1 700	2 000	2 300	2 875	3 450	4 025	4 600	6 900	9 100	11 400	13 700
Double Room	950	1 450	1 700	2 050	2 570	3 080	3 590	4 100	6 150	8 100	10 150	12 200
Triple Room	780	1 200	1 500	1 650	2 070	2 480	2 890	3 300	4 950	6 500	8 150	9 800

6 individual classes (one on or  
2 group classes with Native speakers

**OTHER COSTS**

Security deposit	\$100
Maintenance fee (per week)	₱350
SSP	₱6 500
VISA Waiver	₱3 330
Pacific Cebu Resort 2 weeks (if need)	\$120

- \*Surcharge for SEA VIEW room \$ 25 per week
- \*The school assists the VISA extension of the student after 29 days.
- \*The school rate of Genius English Proficiency Academy is subject to change without prior notice.
- \*Free service: Pick up from the Airport-Genius English.
- \* Maintenance fee - Room cleaning & laundry (twice per week)
- \* School fees are inclusive of tuition, accommodation and 3 meals a day.
- Exclude the books fee
- \* Electricity will be paid by the students

**Entry Requirements**  
Passport and Enrollment form

\* Please read our terms and conditions , house rules for more



**WE PROVE  
YOU CAN!**



**THE MOST AWARDED  
ENGLISH ACADEMY  
IN THE PHILIPPINES**

English  
Vocabulary in  
Use  
Elementary

# The Most Awarded English Academy in the Philippines



**No. 1 English Proficiency Academy in Cebu 2015**

In recognition of world-class excellence in corporate and/or product features benefiting the consumers in any of the countries within the Asia-Pacific Region.



**Best English Proficiency Academy in the Philippines 2015**

Prestigious Corporate & Product Award Seal in recognition of Corporate/Product Features & Quality based on Consumers Surveys & Opinions



**Country's Pride (Outstanding Educator and Entrepreneur) 2015**

In recognition of Filipino world-class excellence in one's chosen field(s) of endeavor worthy of emulation of the rest citizenry towards nation-building.



**Best English Language Center (Cebu) 2014-2015**

Q ASIA'S SEAL OF PRODUCT & QUALITY SERVICE



**People's Choice Excellence Awardee 2015**

in recognition of being an OUTSTANDING COMPANY/PRODUCT based on consumers & public acceptance of its corporate/product features, consumers services & quality.



**People's Choice Excellence Awardee 2016**

in recognition of being an OUTSTANDING COMPANY/PRODUCT based on consumers & public acceptance of its corporate/product features, consumers services & quality.

# Why Choose Genius English?

## Benefits of Genius English Proficiency Academy

- ▶ Learning system based on the principle "group lessons + individual,"
- ▶ The maximum number of students in a group of 8 people
- ▶ Teachers from America, England, Australia and the Philippines
- ▶ Multiracial students (students from Russia, Japan, Korea, United Arab Emirates, India, China, Thailand, Morocco, Europe)
- ▶ School is located near the beach
- ▶ Type of accommodation (Hotel)
- ▶ Free internet
- ▶ Pool and spa on the school grounds
- ▶ 24/7 SECURITY

## The School is Accredited and Certified by the:



**SEC**  
(Securities and Exchange Commission)



**TESDA**  
(Technical Education and Skills Development Authority)



**BI**  
(Bureau of Immigration)



According to the inspection done by the State Department of Education School of the Philippines, Genius English Proficiency Academy is on the TOP among others.

# Classes



GROUP CLASS



1 ON 1

## WE OFFER

Certified courses for pilots and flight attendants!

Business English Course

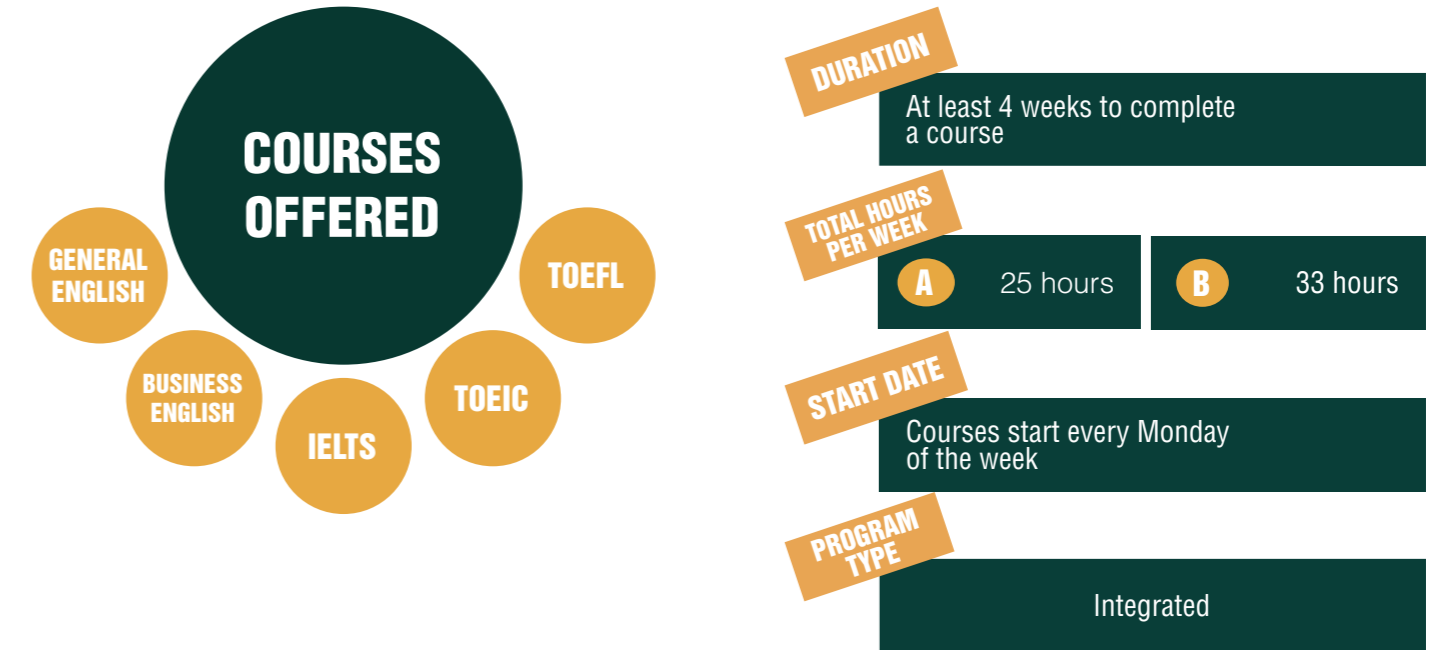
Summer and winter camps

An internship program in the Philippines for Hotel Internship

General English

Preparation for IELTS, TOEIC and TOEFL

# Courses taught at Genius English



COURSE A	COURSE B	SPECIAL COURSE
6 classes per day; 50 minutes per class	8 classes per day; 50 minutes per class	5 classes per day; 50 minutes per class
4 classes man-to-man with a local teacher	6 classes man-to-man with a local teacher	3 classes man-to-man with a local teacher
2 group classes with a Native English teacher	2 group classes with a Native English teacher	2 group classes with a Native English teacher

**TOEIC** – A specialized course that is both practical and effective in teaching the skills needed to get a higher grade in the TOEIC exam.

**IELTS** – This course was developed by a native speaker (an ex-IELTS examiner and trainer) with over 12 years experience teaching IELTS and author of four IELTS books.



# Our Courses

## Types of Courses

### COURSE A

#### 6 Hours ( 50-minute class) per day

- 4 one on one with Filipino Instructor
- 2 group class with Native Instructor
- Accommodation
- 3 meals a day
- Wi-Fi
- Housekeeping & Laundry Services



### General English

CLASS	TIME	SUBJECT	SKILL/ SUB-SKILL	TYPE OF CLASS	INSTRUCTORS
REGULAR	6 HOURS (50 Minutes each class)	Daily Conversation	<b>Speaking</b> - Vocabulary - Pronunciation	1:1	Filipino
		Read and Write	<b>Reading</b> - Comprehension <b>Writing</b> - Vocabulary - Grammar	1:1	Filipino
		Basic Grammar	Writing, Speaking, Reading, Grammar	1:1	Filipino
		Listen and Speak	<b>Listening</b> - Comprehension <b>Speaking</b> - Confidence	1:8	Native (Group Class)
		Pop Culture	<b>Listening</b> - Comprehension - Awareness <b>Speaking</b> - Expressions - Sensitivity	1:1	Filipino
		Supplementary Learning	<b>Listening and Reading</b> - Comprehension - Vocabulary <b>Writing and Speaking</b> - Grammar - Word usage	1:8	Native (Group Class)

# Our Courses

### COURSE A

### BUSINESS ENGLISH

SUBJECT	TYPE OF CLASS
Business English Discussion (Speaking in Business Context)	1:8
Business Expressions / Grammar (Vocabulary in Business Context)	1:1
Reading in Business Context	1:1
Writing in Business Context / Grammar	1:1
Listening in Business Context	1:1
Business Culture	1:8

### COURSE A

### TOEIC

SUBJECT	TYPE OF CLASS
Introduction	1:8
TOEIC Tactics (Grammar)	1:1
TOEIC Tactics (Listening)	1:1
TOEIC Tactics (Reading)	1:1
TOEIC Tactics (Writing)	1:1
TOEIC Tactics (Speaking)	1:8

### COURSE B

#### 8 Hours ( 50-minute class) per day

- 6 one on one with Filipino Instructor
- 2 group class with Native Instructor

- Accommodation
- 3 meals a day
- Wi-Fi
- Housekeeping & Laundry Services



### COURSE B

### General English

CLASS	TIME	SUBJECT	SKILL/ SUB-SKILL	TYPE OF CLASS	INSTRUCTORS
REGULAR	8 HOURS (50 Minutes each class)	Reading	<b>Comprehension</b> - Recognize ideas and facts - Perceive topics - Follow a development - Active reading <b>Reading Techniques</b>	1:1	Filipino
		Speaking	<b>Discussion</b> - Speak at length - Justify opinions - Speculate issues <b>Grammar</b> - Fluency - Confidence <b>Vocabulary</b> - Pronunciation - Appropriate use	1:1	Filipino
		Writing	<b>Grammar Vocabulary</b> - Spelling - Appropriate use - Organization of Idea - Writing style - Sequence of idea <b>Appropriate response</b>	1:1	Filipino
		Listening	<b>Comprehension</b> - Recognize ideas and facts - Distinguish conversations - Follow a development - Active listening	1:1	Filipino
		Writing / Speaking	<b>Improve strategy</b> - Writing style - Speaking technique	1:1	Filipino
		Reading / Listening	<b>Improve strategy</b> - Reading speed - Speech-pattern identification	1:1	Filipino

COURSE B

# Our Courses

## General English

CLASS	TIME	SUBJECT	SKILL/ SUB-SKILL	TYPE OF CLASS	INSTRUCTORS
REGULAR	8 HOURS (50 Minutes each class)	Situational Dialogue	<b>Speaking</b> - Questioning and answering <b>Writing</b> - Respond and correspond	1:1	Filipino
		Effective Communication	<b>Listening</b> - Active Listening - Interpersonal Sensitivity <b>Speaking</b> - Confidence	1:1	Filipino

COURSE B

## TOEIC Preparation Program

SUBJECT	TYPE OF CLASS
TOEIC Program Introduction	1:8
TOEIC Tactics (Grammar)	1:1
TOEIC Tactics (Listening)	1:1
TOEIC Tactics (Reading)	1:1
TOEIC Tactics (Writing)	1:1
TOEIC Tactics (Speaking)	1:8
TOEIC Tactics (Picture Recognition)	1:1
All about TOEIC Practice Test	1:1

COURSE C

## TOEIC Advance Program

SUBJECT	TYPE OF CLASS
TOEIC Program Strategies	1:8
TOEIC Tactics (Grammar)	1:1
TOEIC Tactics (Listening)	1:1
TOEIC Tactics (Reading)	1:1
TOEIC Tactics (Writing)	1:1
TOEIC Tactics (Speaking)	1:8
TOEIC Tactics (Picture Recognition)	1:1
All about TOEIC Practice Test	1:1

## IELTS Course Outline

### Course Objectives:

- ▶ To prepare you to take the IELTS by discussing, practicing, and analyzing each section of the test;
- ▶ To improve your IELTS test-taking skills and strategies in each section of the test;
- ▶ To review particular grammatical patterns that occur regularly on the IELTS;
- ▶ To simulate actual test-taking conditions so that you become familiar with and more comfortable with test situation;
- ▶ To learn the scoring procedures for the exam so that you can interpret your own test scores;
- ▶ To improve the quality of writing you procedure under time pressure.

### Course Highlights:

- ▶ Exceptional instruction our tutors are truly the best-of-the-best in terms of training and expertise and dedication.
- ▶ Completely custom-your instructor will design plan targeted to your specific needs.
- ▶ Our tutors are goal oriented and results driven. **Guaranteed**
- ▶ Flexibility and convenience-a schedule built around your hectic lifestyle and the freedom to choose in-person or web-based sessions.
- ▶ No distractions-your tutor will keep you motivated and help you to focus on achieving your best score.
- ▶ Ideal for business professionals and students.
- ▶ Learn unique templates for every section of IELTS Exam.

# Our Courses

## IELTS

### Improvement of Guarantee Students of Genius IELTS Program



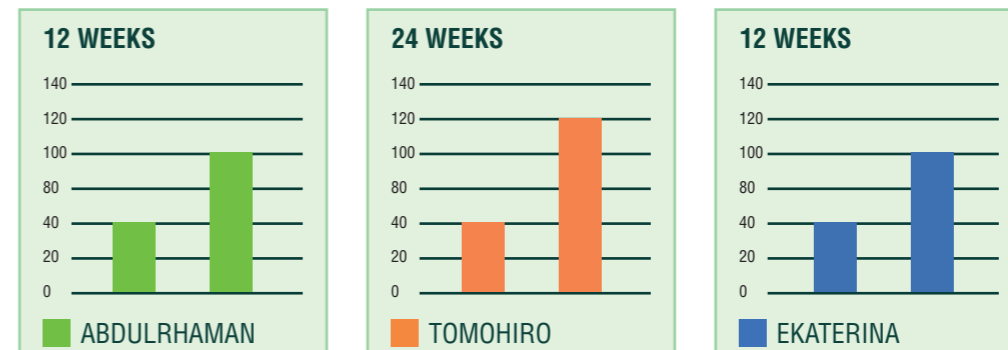
GEPA has an official IELTS Training center where students can both study and do IELTS mock test Trained professional GEPA teachers.

IELTS Trainers' Training is held quarterly at Genius English Proficiency Academy (GEPA) Campus Chance to ask questions and discuss answers with a real IELTS examiner (8-hour seminar).

The IELTS Resource Center is managed by both the British Council and Genius English Proficiency Academy (GEPA) Training Center. The effective learning space allows students to have access to textbooks and samples of IELTS test materials and information about the test  
 Latest IELTS Preparation Course books (Cambridge Publishing)  
 Practice tests, Audio CD, DVD, tapes Comfortable study area Information on studying abroad, books and materials

IELTS Target Score Guarantee Program  
 Students can experience the improvement of their score by participating in the weekly IELTS mock tests.

### Improvement of Guarantee Students of Genius TOEFL Program



## TOEFL

Authorized TOEFL Training Venue in Cebu, Philippines Weekly Mock Test for TOEFL (iBT and pBT) is on going in Genius English Proficiency Academy by ETS going on every week.

Weekly Mock Test for TOEFL (iBT and pBT) is conducted by Genius English Proficiency Academy (GEPA) instructors. Students can check their improved score as well as to determine the strong & weak Point through Weekly Mock TEST. Quick general management with direct connection to ETS American Headquarters.

Latest TOEFL Materials & Trend. Customized TOEFL Curriculum with the latest TOEFL Materials. We provide latest trend materials and iBT Mock Tests.

# University Pathway Program

This is a program designed for students aspiring to enter and study in one of the top-notch Universities and Colleges. Genius English Proficiency Academy is committed to provide academic excellence in achieving personal Professional goals. With a team of Career Specialist and experienced Teachers, combined with an exceptional facilities and accommodation conducive for learning, is a sure path towards earning a Degree from one of our partner University in the UK and USA.

## PROGRAM DURATION

- 24 weeks (6 months)
- 32 weeks (8 months)
- 40 weeks (10 months)
- 48 weeks (12 months)

The length of the program to be taken is based on the results of their entrance level evaluation determined by the Academy Career Specialists. All student applicants will undergo 2 separate test respectively, online and paper-based examination.

## LEVEL TEST

**Online Test** - A Speaking test through a Skype Interview prior to the arrival of the students applicant.  
**Paper-based Test** - A test of the student's Reading, Writing and Listening skills administered upon arrival in the academy.

SKILL	Speaking	Reading	Listening	Writing
TASK	Online Interview	2 Reading passages	2 Recordings	2 Writing tasks
QUESTIONS	Coversation General Knowledge	30 multiple choice questions	20 questions (variety)	200 words /task
FOCUS	Pronunciation Organization of Idea	Comprehension Vocabulary	Comprehension Vocabulary	Grammar Organization of idea
DURATION	20 minutes	40 minutes	30 minutes	40 minutes

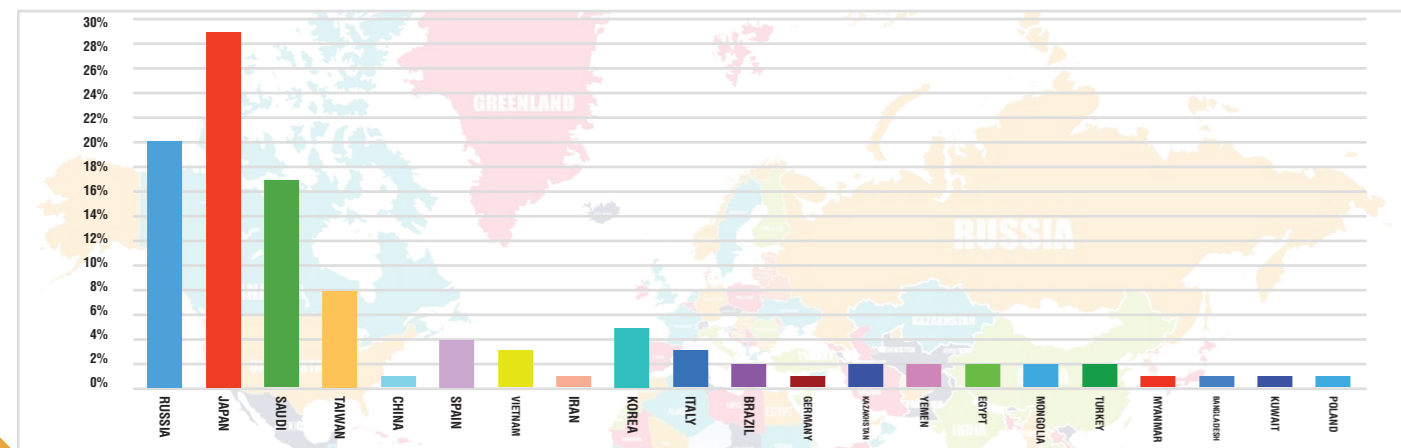
If the student has been determined as Beginner level after the Online test, he/she may not need to undergo the Paper-based test upon his/her arrival

## SKILL LEVELS

**Beginner** - has poor command in Oral and Written communication; has not mastered the basic skills in Reading, Speaking and Writing;and has difficulty organizing expressing and conveying personal thoughts.  
**Elementary** - has a fair command in Oral and Written communication, may often commit various mistakes; has a good foundation of the basic English skills; may commit errors in delivering an idea.  
**Intermediate** - has a good command in both Oral and Written language; may commit tolerable errors; has good choice of vocabulary and is able to maintain correct grammar; and can express personal thoughts and ideas comfortably.  
**Advance** - has an excellent command in both Oral and Written communication; is able to express personal feelings with ease; has a wide variety of vocabulary and uses different communication style;and may commit unidentifiable errors occasionally to none.

**Program duration according to result: Beginners-12 months, Elementary-10 or 12, Intermediate-8 or 10 and Advance 6 or 8 months**

## RATIO OF NATIONALITIES



# University Pathway Program



STUDY ENGLISH AT GENIUS

TAKE GENIUS'S PRE-DEGREE COURSE

ENTER INTO ONE OF OUR PARTNER UNIVERSITIES OR COLLEGES

## DETERMINE YOUR ENGLISH LEVEL

Genius English Proficiency Academy Specialists will recommend a study plan according to your objectives, including how many weeks of English classes you need.

## STUDY PLAN

Duration	1-3 (3 months)	4-6 (3 months)	7-8 (2 months)	9-10 (2 months)	10 months
Genius English Levels	Beginner	Pre-Intermediate	Intermediate	Advanced	University Intro
Principal Courses Available	General English				Pre-Degree Course

## APPROXIMATE DURATION OF YOUR PROGRAM (ENGLISH + PRE-DEGREE)

If your Level is	Program Structure	Length of your Program
Advanced	8 weeks of English + 10 months of Pre-Degree Course	48 weeks
Intermediate	8 weeks of English + 10 months of Pre-Degree Course	48 weeks
Pre-Intermediate	16 weeks of English + 10 months of Pre-Degree Course	49 weeks
Beginner	16 weeks	49 weeks

## GENIUS ENGLISH GETSET UNIVERSITY PARTNERS





# Accommodation

*Your home away from home*



# Activities



YOGA



VOLLEYBALL CONTEST



TABLE TENNIS TOURNAMENT



DANCE CONTEST

# Be a Healthy Genius



- Cosmopolitan, friendly and safe environment
- World famous cultural attraction
- Excellent shopping, entertainment and night life
- Accesible transportation anytime
- Modern student lounge
- Outdoor patio with sofa and bird garden
- Large projection screen for TV, and movie nights
- 50 + classrooms








## FITNESS CENTER

- ▶ YOGA SALON
- ▶ GYM
- ▶ DANCE STUDIO
- ▶ MUSIC & ARTS THEATER



## FOLLOW US

-  /GeniusEnglishAcademy
-  /Studyenglishgenius
-  /GeniusEnglishPH
-  /geniusenglish
-  /genius.school

**GENIUS ENGLISH PROFICIENCY ACADEMY**

EGI HOTEL BLDG. 1  
LOOC, MARIBAGO, LAPU-LAPU CITY  
6015 CEBU PHILIPPINES

(+6332)236-1442

info@studyenglishgenius.com

geniusenglishacademy

www.studyenglishgenius.com



# COMPLETE ENGLISH LANGUAGE LEARNING EXPERIENCE

**Cebu Mactan International Airport:** 15mins by car  
**Save More:** Supermarket, 5mins on foot  
**Gaisano Grand Mall:** Shopping Mall, 10mins by car  
**Post Office:** 15mins by car  
**Golf practice:** Near the airport  
**Mactan Doctors Hospital:** General Hospital, 6mins by car  
**Health Club:** Swimming pool, spa - inside hotel  
**Island Hoping, Scuba Diving:** Many places in Mactan



 **GENIUS**  
ENGLISH PROFICIENCY ACADEMY